

Apartments for Sale in Supersano (LE)

310.000 €

Ref: AP676P



Size: 400 sqm

Rooms: 13

Bedrooms: 2

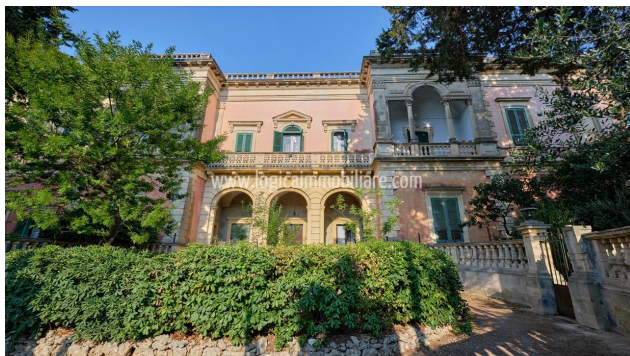
Bathrooms: 2

Energy class: G

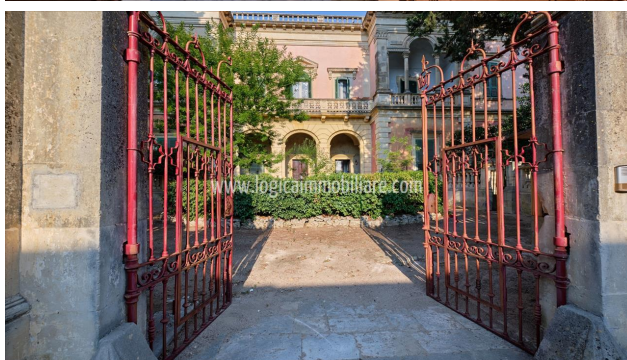
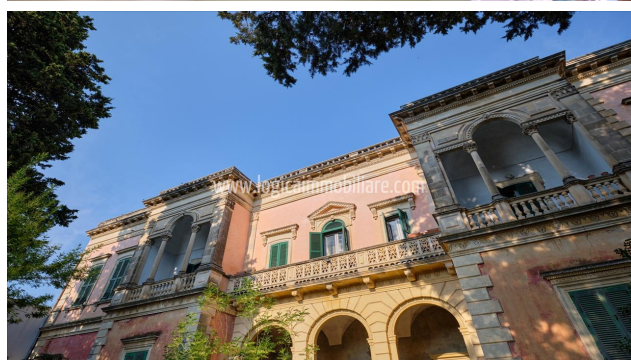
IPE: 175

In the heart of Salento, less than 15 minutes from the Adriatic coast and on the road to Santa Maria di Leuca, noble apartment located in one of the most famous buildings in the center of Supersano. The apartment, located on the first floor, has a double entrance, a representative one, embellished by a majestic white marble staircase, and a secondary one from via Trieste. Its surface of approximately 400 sqm is divided into 2 entrance corridors, a large living room with frescoed ceilings, another living room, dining room, kitchen with level terrace, study and laboratory, 2 large double bedrooms, one of which with private bathroom, and an additional bathroom. The various rooms have the typical vaulted ceilings and pavilion, in a continuous alternation of pictorial decorations that characterize and embellish the spaces. From the main hall it is possible to access a double loggia characterized by Corinthian columns and a balcony that offers a splendid glimpse of the Serra, the green lung of the Salento hinterland. The house has all the systems, water-sewerage and heating with methane radiators, the electrical and sanitary system has recently been partially revised, therefore it is habitable, although it needs a restyling, which can make its particularities shine, and a containment intervention in the dining area. The pertinent terraced roof, accessible internally, completes the property, as well as the possibility of purchasing a storage room to be used as a garage on via Triste. With a few simple interventions to modify the interior spaces, it is possible to create additional bedrooms, or to divide the house into two apartments, thanks to the presence of the double entrance. This splendid property lends itself well to hosting one or more families looking for a prestigious property, not too far from the sea, but in the city center, which preserves the typicality of the place while remaining unique at the same time. The town of Supersano with its square is 400 m away, the scenic seaside town of Castro is

20 km away by car, Santa Maria di Leuca 30 km, Maglie 15 km, the baroque center of Lecce 45 km and Brindisi airport a hour and 15 minutes.







LOGICA IMMOBILIARE S.R.L.

Viale G. Baccelli, 26 - 53042 Chianciano Terme (SI)

P.IVA: 01257190528

Tel: +39 0578 60581 / Fax: +39 0578 654426 / Email: info@logicaimmobiliare.com